

"WANA"

WANA

- 5466 .



SEED INFO

Seed info

تموز/يوليو-كانون أول/ديسمبر 2003

No. 25

22

كلمة المحرر

(Seed Info)

(CWANA)

(WANA)

CPRO

(ITAS)

.FHCRAA "

(SOPs)

Seed Info 25 رقم

تموز/يوليو-كانون الأول/ديسمبر 2003

أنباء من شبكة WANA الإقليمية للبذار

- 2003

WANA

يعرض هذا الباب الأخبار المتعلقة بأنشطة شبكة غربى آسيا وشمال إفريقيا WANA للبذار. ويعمل بانتظام على تحديث التقدم فى أنشطة شبكة WANA للبذار وتقارير اجتماعات اللجنة التوجيهية ومجلس شبكة WANA للبذار.

CWANA

24

3 - 2

WANA

2002 /

: ()

http://www.icarda.cgiar.seed_unit/SeedUnit/Activ/activ1.htm

z.bishaw@cgiar.org :

(CNCC)

-:

Kamel Latrous, Le Directeur Général, Centre National de Contrôle et de Certification des Semences et Plants (CNCC), Ministère de l'Agriculture, Bp 119, Hacen Badi, 16200 El-Harrach, Alger, Algeria. Tel: ++213-21-521207, 521213; Fax: ++213-2-529900; E-mail: cncc@wissal.oz

Mrs. Safaa Bint Mohammed. Al-Farsi, Head of Seed and Genetic Resource Laboratory, Ministry of Agriculture and Fisheries, P. O. Box: 467, Post Code 113, Muscat, Oman; Tel: ++968-694182; Fax: ++968-695909; E-mail: agricop@omantel.net.om

(ICARDA) WANA

(FAO)

.WANA

()

2002 / 19

• FOCUS_

WANA

•
•
•
• WANA

(WTO)

(IT/GRFA)

<http://www.icarda.cgiar.org/seed%20unit/file/home.htm>

)

(

.(24)

الأخبار ووجهات النظر
يتضمن هذا الباب الأخبار ووجهات النظر والآراء
والمقترحات في مجال البذار. كما ويعتبر منتدى للحوار
بين العاملين في قطاع البذار.

" " ()

()

()

(VCU)

()

(DUS)

N. P. Louwaars, Wageningen, P. O. Box 16, 6700
 AA Wageningen, The Netherlands; E-mail:
 N.P.Louwaars@wur.nl

(WTO)

1905

1936

1993 (FAO)

(ICARDA)

(10 50)

7-5

(FAO)

2003 /

A.J.G. van Gastel, Seed Unit, ICARDA, P.O.Box
5466, Aleppo, Syria; E-mail: a.vangastel@cgiar.org

1924 (ISTA)

75

ISTA

(DUS)

(VCU)

/

DGISP

H. S. Prakesh, University of Mysore, Mysore 570
006, India; E-mail: appbot@sanchamet.in

(ISNAR)

(FAO)

Sarah Meier, ISTA, Zürichstrasse 50, P. O. Box
308, 8303 Bassersdorf, Switzerland; E-mail:
ista.office@ista.ch; Website: <http://www.seedtest.org>

(GMOs)

103

(DGISP)

ISNAR

DGISP

ISNAR-FAO

DANIDA

25

<http://www.isnar.cgiar.org/ibs/biosafety/index.htm>
Source: *Future Harvest News*

(ISAAA)

2002 /

(EBIC)

2002 /

M. A. Moneim, Director, EBIC, 9 Gamaa St, AGERI, Giza 12619, Egypt; Telefax: ++20-2-5721582; E-mail: ehic_mz@ageri.sci.eg; Website: <http://www.egyptbic.com>

مساهمة المشاريع وبرامج البذار
في هذا الباب ندعو البرامج الوطنية والمشاريع والجامعات
والمنظمات الإقليمية والدولية موافقتنا بأخبار أنشطتهم المتعلقة
بالبذار.

<http://www.icarda.cgiar.org/Afganistan/index.htm>

<http://webforum.cgnet.com/afghanistanconsortium>

(1)

(2) (FHCRAA/USAID)

(3)

(1)

(3)

(2)

(4)

(ICARDA)

ICARDA

2002

250

41

260

3500

821

2002

40000

2002

5000

4583

4185

53

(CIP)

22

23-21

2002 /

100

2002

/

A.J.G.van Gastel, Seed Unit, ICARDA, P. O. Box
5466, Aleppo, Syria; E-mail: a.vangastel@cgiar.org

2004 /

.2002 /

.1

.2

.3

.4

.5

Petros Xystouris, Seed Production Center,
Department of Agriculture, Nicosia, Cyprus; E-
mail: doagrg@cytanet.com.cy

.6

.7

.8

(NAIA)

2002 / 288/2002

.9

	2	.10
	3	.11
		.12
		.13
	:	
	.1	
	:	
	2	
	:	
		.1
		.2
	:	.3
		.3
		.4
(2) EARO (1) :		.1
(4) (3)		.2
(7) (6) (5)		.3
(9) (8)		.4
(10) (FAO IDA, UNDP, ISTA, FAL)		.4
(11)		.5
		.1
Belay Semane, NAIA, P. O. Box 9197, Addis Ababa, Ethiopia, E-mail: nsia@telecom.net.et or nfia-ethiopia@telecom.net.et		

150-135)

(/ 300)

(/

.2

(Tef)

/ 2

80

(Tef)

Company	Suppliers
Agricultural Material Company	Anseme, Asgrow, Bruinsma, California, Clause, Daehnfeldt, Hollar, Hungnong, Tokita,
Unifert	Huizer, Hurst, Ohlsens Enke, Petoseed, Petotec, Royal Sluis, Technisem
Debbane	De Ruita, Ferry Morse Nikerson, Takii, Zwaan
Robinson	Sloot & Groot, Rick Zwaan
Lamico	Sakata, Corona, Nonew Seeds
Amalia	Enza Zaden
CAL	Hollar

/ 1

(2)

(1) :

(4)

3)

1

%80

(1000)

12-4

(15-10)

Crop	Hybrids (kg)	OPPs (kg) [†]	Total (kg)
<i>Greenhouses</i>			
Cucumber‡	11	-	11
Tomato	70	-	70
Eggplant	20	-	20
Melons	30	-	30
Pepper	15	-	15
<i>Open Fields</i>			
Green beans	-	100,000	100,000
Green peas	-	100,000	100,000
Sweet corn	12,000	-	12,000
Melons	400	500	900
Watermelons	750	1000	1750
Cucumber	600	2000	2600
Tomato	150	-	150
Eggplant	30	200	230
Okra	-	2000	2000
Sweet pepper	30	70	100
Hot pepper	7	-	7
Squash	6000	-	6000
Red beets	-	3000	3000
Carrots	-	4000	4000
Radish	-	25,000	25,000
Onions	2000	10,000	12,000
White cabbage	250	-	250
Red cabbage	10	0	10
Cauliflower	200	50	250
Parsley	-	10,000	10,000
Lettuce	-	5000	5000
Spinach	-	10,000	10,000
Total (kg)	22,562	272,820	295,382

[†] million seeds

Hassan Machlab, Agricultural Research Institute,
P. O. Box 287, Tal Amara, Rayak, Fax: ++961-8-
900077; E-mail: hmachlab@larileb.com

Cenchrus ciliaris L. (UAE Accession No. MAF-
120) *Coelachyrum piercei* Bench (UAE
Accession No. MAF-116)

1999 /

1976 XXIX ()
 .1991 ()
 (APRP)
 (ICARDA)
 8 6
 2000 /
 1991 1976 12.6 13.6 2002 /
 600

(1)
 (2) (1) :
 (5) (4) (3) /
 (8) (7) (6)
 (10) (9)

S. K. Nadaf,; S. M. Al-Farsi and S. A. Al-Hinai,
 Seed and Plant Genetic Resources Laboratory,
 Agriculture Production Research Center, Ministry
 of Agriculture and Fisheries, P. O. Box 50, PC
 121, Oman

(1) :
 (Common) *Cichorium intybus*)
 (2) .(Objectionable) (
 %1.5 (*Cichorium intybus*)
 %0.8
 (3). %0.5 (PSC) (NSC)
 %0.05

28
 (8) (7)
) mash () ()
 () (3) ()
 () () ()
 .()

1995

loquat

/ /

(YMH/TOB/MCD/3/LIRA) BDME-9

2002 / (Dostilk) " "

Source: *The Seed News*, Vol3 No2 July-December
2002.

%14- 10

كيفية العمل
نقدم في هذا الباب المعلومات التقنية والعملية والتي
ربما يجدها العاملون في مجال تقنيات البذار مفيدة لهم.

2002 /

27

5 (FLIP 93-93C) 4

(FLIP 88-85C)

(ISTA)

()

(SOPs)

(ILL 6994) 3

(ILL 7201) 4

22

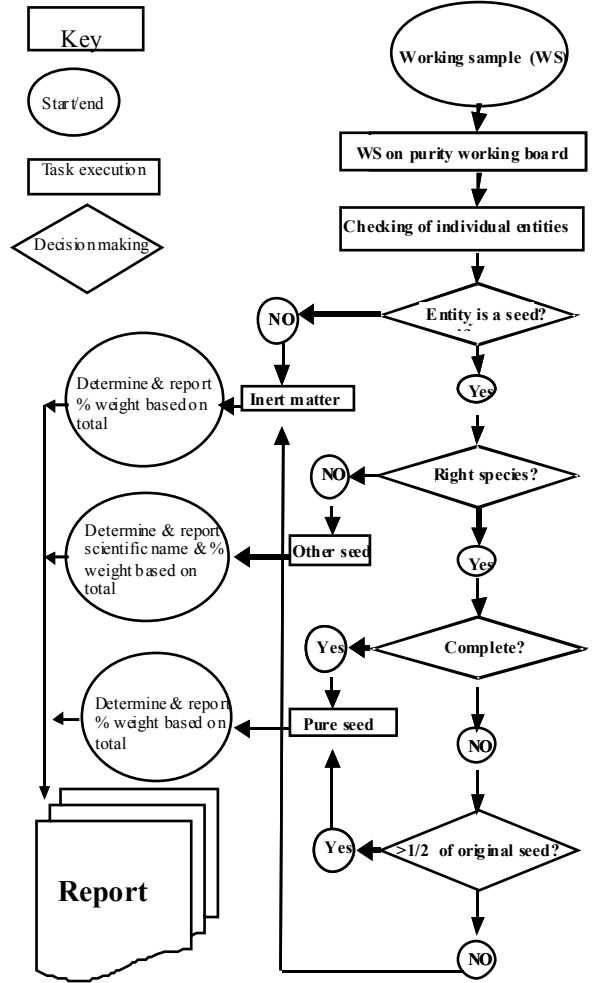
3

2002 /

4

()

Abdul Mohsen Said Omar, GOSM, P. O. Box
5857, Aleppo, Syria; Fax: ++963-21-4644901; E-
mail: gosm@mail.sy



(ITAS)

1998

Abdoul Aziz Niane, Seed Unit, ICARDA, P.O. Box 5466, Aleppo, Syria; E-mail: a.niane@cgiar.org

معلومات البحوث

يعرض هذا الباب مقتطفات قصيرة عن المواضيع العملية الموجهة للبحث الزراعي وعلوم البذار.

470000	1980	430500	:
1817500	1988		
2002	1752698		
920000			
		955000	
.1988	1133850	1980	190782

(2) ()

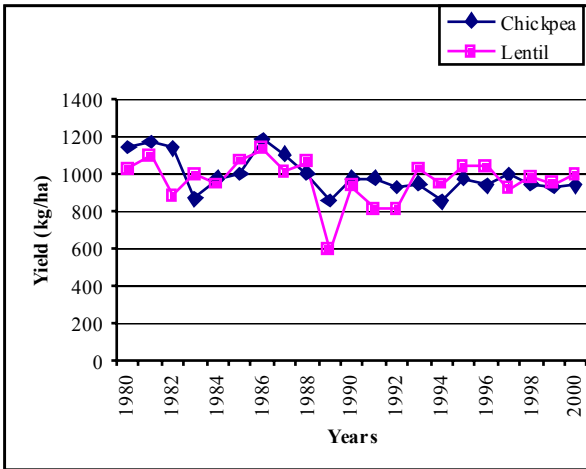


Figure 1. Productivity of chickpea and lentil in Turkey

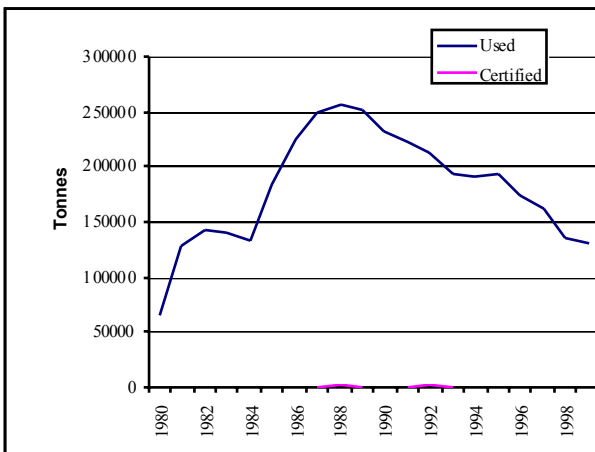


Figure 2. Proportion of certified seed used for legume production in Turkey

(1)

(Sakar *et al.*, 1988; Durutan *et al.*, 1988; Acikgoz *et al.*, 1993; and Küsmenoglu and Meyveci, 1997)

()

/

/

(3)

(2)

()

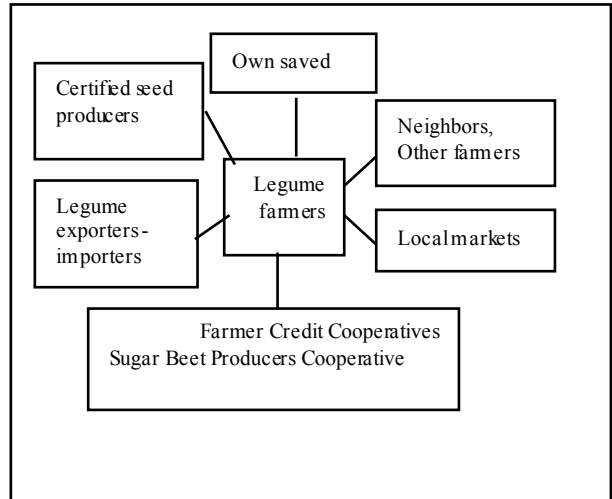
(Küsmenoglu and 150000

Kugbei, 2000)

()

(ITAS)

(ITAS)



(ITAS)

(Gareau *et*

al., 1997)

1998

Gokce

1997

45

1997

1998

(ITAS)

Gokce

2001

Kafkas

40

1998

(ITAS)

()
" "

References

Acikgoz, N., M. Karaca, C. Er and K, Meyveci. 1993.
Chickpea and Lentil Production in Turkey. *In*

Secretariat, 726 & 731 (7th floor) Institute of Food Research and Product Development Building, Kasetsart University, Bangkok 10903, Thailand; Tel: ++66-2-9405464; Fax: ++66-2-9405467; Email:apsa@apsaseed.com

Third AFSTA Congress, 24-26 March 2004 Tunis, Tunisia. For more information please contact: Mr. Raouf Ghariani, Managing Director, Espace Vert, 22, Rue 7134 El Manar II, Tunis, Tunisia Tel: +++216-7-333858; Fax: ++216-71-344158; E-mail: espace.vert@planet.tn

Training

Sustainable Agriculture in an Environmental Perspective, 1September to 17 October 2003, Svalv, Sweden. The training will take place at the headquarters of Svalf Weibull in Svalv, Sweden. The closing date for application is May 5, 2003. Address for communication: Svalf Weibull AB, Consultancy Department, SE-268 81 Svalöv, Sweden; Tel: ++46-418-667000; Fax: ++46-418-667109; E-mail: marie.hardfors@swwseed.se

ندرج أدناه بعض المراجع والكتب والمواد العلمية في الدوريات التي تحظى باهتمام القراء. يطلب المحرر من المشاركين إرسال قائمة بالنشر العلمية التي تتعلق بمواضيع السياسة البنرية والمواضيع التنظيمية والفنية للبذار وأيضاً النشرات الدورية لتضمينها في النشرة الإخبارية للبذار (Seed info).

ISTA. 2003. **International Rules for Seed Testing.**

Basra, A. S. (ed.). 2000. **Hybrid Seed Production in Vegetables: Rationale and Methods in Selected Crops.** The monograph published simultaneously as the Journal of New Seeds, 3/4) Price \$24.95 (for developing countries). For more information contact: GTZ, Dag-Hammarskjold-Weg 1-5, Postfach 5180, 65726 Eschborn, Germany; Website: <http://www.gtz.de>.

David, S. and B. Oliver. 2002. **Handbook Two Business Skills for Small-Scale Seed Producers and Handbook Three: Business Skills for Small-Scale Seed Producers: A Trainer's Guide.** For details contact: Dr Roger Kirkby, CIAT Africa Coordinator, Kawanda Agricultural Research Institute, P. O. Box 6247, Kampala, Uganda. Fax: ++256-41-567635; E-mail: ciat-africa@cgiar.org.

Nicolas, G., K.J. Bradford, D. Come and H. Pritchard (eds.). 2003. **The Biology of Seeds: Recent Research Advances.** ISBN 0 85199 653 1; Price \$175; 500 pp; Website: <http://www.cabi-publishing.org>

Muehlbauer, F.J. and W.J. Kaiser (eds.). **Expanding the Production and Use of Cool-Season Food Legumes.** 388-398pp. Kluwer Academic Publishers, Dordrecht, The Netherlands.

Durutan, N., B. Yilmaz and M. Kiziltan. 1988. **Small Grains and Food Legume Production in Turkey.** In Srivastava, J.P., M.C. Saxena, S. Varma and M. Tahir (eds.). **Winter Cereal and Food Legumes in Mountainous Areas,** 66-68pp. ICARDA, Aleppo, Syria
Gareau, R.M., F. Muel and J.V. Lovett 1997. **Trends in Support for Research and Development of Cool Season Food Legumes in the Developed Countries.** In R. Knight (ed.). **Linking Research and Marketing Opportunities for pulses in the 21st century,** 59-66pp. Kluwer Academic Publishers, Dordrecht, The Netherlands.

Kusmenoglu, I., and K. Meyveci. 1997. **Chickpea in Turkey.** In Saxena, N.P., M.C. Saxena, C. Johansen, S.M. Virmani, and H. Harris (eds.) **Adaptation of Chickpea in the West Asia and North Africa Region,** 67-84pp. ICRISAT, Patancheru 502 324, Andhra Pradesh, India.

Kusmenoglu, I., and S. Kugbei. 2000. **Developing small-scale Seed Enterprise for Food Legumes in Turkey.** In Kugbei, S., M. Turner and P. Witthaut (eds.) **Finance and Management of Small-scale Seed Enterprises,** 123-128pp. ICARDA, Aleppo, Syria.

Sakar, D., N. Durutan, and K. Meyveci. 1988. **Factors Limiting Productivity of Cool-Season Food Legumes in Turkey.** In Summerfield, R.J. (ed.). **World Crops: Cool-Season Food Legumes,** 137-146pp. Kluwer Academic Publishers, Dordrecht, The Netherlands.

الاجتماعات والدورات التدريبية

يحتوي هذا الباب على إعلانات الاجتماعات وحلقات البحث وورشات العمل والدورات التدريبية. نرجو منكم إرسال إعلاناتكم لورشات العمل وحلقات البحث والدورات التدريبية القطرية والإقليمية والدولية المنظمة في دولتكم.



ISTA **Forest Tree and Shrub Seed Committee Workshop, 20-25 October 2003, Prague, Czech Republic.** For more information contact the organizer: Mrs Zdenka

Prochazkova, Forestry and Game Management Research Institute, Research Station Uherske Hradiste #686 04 Kunovice, Czech Republic; Tel: ++420-632-549115; Fax: ++420-632-549119; Email: prochazkova@vulhmuh.cz

Asian Seed 2003, 17-21 November 2003, Bangkok, Thailand. For more information please contact: APSA

Manipulation of Plants. ISBN 0 85199 725 2; Price \$35; 158 pp.

S. Adams and V. Henson-Apollonio 2002. Defensive Publishing: A Strategy for Maintaining Intellectual Property as Public Goods: ISNAR Briefing Paper 53.

Can be read online at http://www.isnar.cgiar.org/publications/briefing/bp_53.htm or downloaded in Pdf format from <ftp://ftp.cgiar.org/isnar/publicat/bp-53.pdf>

FAO. 2003. World Agriculture: Towards 2015/2030- An FAO Perspective. A hardcopy of this report and the summary report can be ordered at <http://www.fao.org/icatalog/inter-e.htm>

Evenson, R.E. and D. Gollin (eds). 2003. Crop Variety Improvement and Its Effects on Productivity: ISBN 0 85199 549 7; Price \$140; 544 pp.

Pardey, P.G. (ed). 2002. The Future of Food: Biotechnology Markets and Policies in an International Setting. Published by the IFPRI and distributed by Johns Hopkins University Press 2715 N, Charles Street, Baltimore, Maryland, 21218-4319, USA. Website: <http://www.jhup-books.com>, 329pp; ISBN 0 89629 709 8; Price (Pb) 13.50.

D.R. Murray. 2003. Seeds of Concern: The Genetic

SEED INFO

:

:

:

:

:

الرجاء إرسال الاستمارة بعد ملئها إلى شبكة WANA الإقليمية للبذر، وحدة البذار، إيكاردا، ص ب 5466 ، حلب، سورية؛
فاكس: 2551860 \ 2225105 \ 963-21/2213490 ++ E-mail: z.bishaw@cgiar.org